

Frequency Table

Class

		Frequency	Percent	Valid Percent	Cumulative Percent
Valid	D	24	28.6	30.8	30.8
	E	29	34.5	37.2	67.9
	St	25	29.8	32.1	100.0
	Total	78	92.9	100.0	
Missing	System	6	7.1		
Total		84	100.0		

Sex

		Frequency	Percent	Valid Percent	Cumulative Percent
Valid	Male	42	50.0	53.8	53.8
	Female	36	42.9	46.2	100.0
	Total	78	92.9	100.0	
Missing	System	6	7.1		
Total		84	100.0		

Mobile phones in family

		Frequency	Percent	Valid Percent	Cumulative Percent
Valid	0	1	1.2	1.3	1.3
	1	6	7.1	7.7	9.0
	2	31	36.9	39.7	48.7
	3	27	32.1	34.6	83.3
	4	13	15.5	16.7	100.0
	Total	78	92.9	100.0	
Missing	System	6	7.1		
Total		84	100.0		

Own mobile

		Frequency	Percent	Valid Percent	Cumulative Percent
Valid	No	38	45.2	48.7	48.7
	Yes	40	47.6	51.3	100.0
	Total	78	92.9	100.0	
Missing	System	6	7.1		
Total		84	100.0		

For how long own a mobile phone

		Frequency	Percent	Valid Percent	Cumulative Percent
Valid	Less than 2 months	6	7.1	15.4	15.4
	Less than 6 months	6	7.1	15.4	30.8
	Less than 1 year	15	17.9	38.5	69.2
	Less than 2 years	5	6.0	12.8	82.1
	More than 2 years	7	8.3	17.9	100.0
	Total	39	46.4	100.0	
Missing	System	45	53.6		
Total		84	100.0		

Type of mobile phone

		Frequency	Percent	Valid Percent	Cumulative Percent
Valid		50	59.5	59.5	59.5
	Alcatel	3	3.6	3.6	63.1
	Ericson	1	1.2	1.2	64.3
	LG 7100	1	1.2	1.2	65.5
	Motorola	2	2.4	2.4	67.9
	Motorola e398	2	2.4	2.4	70.2
	Nokia	6	7.1	7.1	77.4
	Nokia 1600	1	1.2	1.2	78.6
	Nokia 2100	1	1.2	1.2	79.8
	Nokia 3200	1	1.2	1.2	81.0
	Nokia 3310	1	1.2	1.2	82.1
	Nokia 3330	2	2.4	2.4	84.5
	Nokia 3360	1	1.2	1.2	85.7
	Nokia 3410	1	1.2	1.2	86.9
	Nokia 5100	1	1.2	1.2	88.1
	Nokia 7210	1	1.2	1.2	89.3
	Panasonic	1	1.2	1.2	90.5
	Panasonic G50	1	1.2	1.2	91.7
	Panasonic X60	1	1.2	1.2	92.9
	Sagem MYC5-2	1	1.2	1.2	94.0
	Siemens	1	1.2	1.2	95.2
	Sony Ericson K500i	2	2.4	2.4	97.6
	Sony Ericson T300	1	1.2	1.2	98.8
	Sony Ericson TZ200	1	1.2	1.2	100.0
	Total	84	100.0	100.0	

Mobile phone acquired from

	Frequency	Percent	Valid Percent	Cumulative Percent

Valid	Family	34	40.5	85.0	85.0
	Relatives	5	6.0	12.5	97.5
	Bought with my own money	1	1.2	2.5	100.0
	Total	40	47.6	100.0	
Missing	System	44	52.4		
Total		84	100.0		

Learned how to use mobile phone

		Frequency	Percent	Valid Percent	Cumulative Percent
Valid	On my own	32	38.1	80.0	80.0
	From my parents	4	4.8	10.0	90.0
	From relatives	1	1.2	2.5	92.5
	Read the manual	3	3.6	7.5	100.0
	Total	40	47.6	100.0	
Missing	System	44	52.4		
Total		84	100.0		

Type of usage

		Frequency	Percent	Valid Percent	Cumulative Percent
Valid	1	2	2.4	5.0	5.0
	2	10	11.9	25.0	30.0
	3	13	15.5	32.5	62.5
	4	3	3.6	7.5	70.0
	5	2	2.4	5.0	75.0
	6	6	7.1	15.0	90.0
	7	3	3.6	7.5	97.5
	8	1	1.2	2.5	100.0
	Total	40	47.6	100.0	
Missing	System	44	52.4		
Total		84	100.0		

Number of SMSs MMSs per week

		Frequency	Percent	Valid Percent	Cumulative Percent
Valid	None	10	11.9	25.6	25.6
	Up to 5	18	21.4	46.2	71.8
	Up to 10	4	4.8	10.3	82.1
	Up to 20	4	4.8	10.3	92.3
	More than 20	3	3.6	7.7	100.0
	Total	39	46.4	100.0	
Missing	System	45	53.6		

Total	84	100.0	
-------	----	-------	--

SMSs to

		Frequency	Percent	Valid Percent	Cumulative Percent
Valid	Friends	22	26.2	64.7	64.7
	Relatives	7	8.3	20.6	85.3
	Other	3	3.6	8.8	94.1
	Friends, other	1	1.2	2.9	97.1
	Friends, relatives, others	1	1.2	2.9	100.0
	Total	34	40.5	100.0	
Missing	System	50	59.5		
Total		84	100.0		

Talk more to

		Frequency	Percent	Valid Percent	Cumulative Percent
Valid	Parents	21	25.0	61.8	61.8
	Relatives	4	4.8	11.8	73.5
	Friends	9	10.7	26.5	100.0
	Total	34	40.5	100.0	
Missing	System	50	59.5		
Total		84	100.0		

Advantage of mobile phones

		Frequency	Percent	Valid Percent	Cumulative Percent
Valid	Communicate with relatives whenever I want	14	16.7	36.8	36.8
	Communicate with friends whenever I want	7	8.3	18.4	55.3
	Feel more secure	13	15.5	34.2	89.5
	Everything	4	4.8	10.5	100.0
	Total	38	45.2	100.0	
Missing	System	46	54.8		
Total		84	100.0		

Disadvantage of mobile phones

		Frequency	Percent	Valid Percent	Cumulative Percent
Valid	Health issues	25	29.8	65.8	65.8
	Cost of acquisition	7	8.3	18.4	84.2
	Cost of usage	3	3.6	7.9	92.1

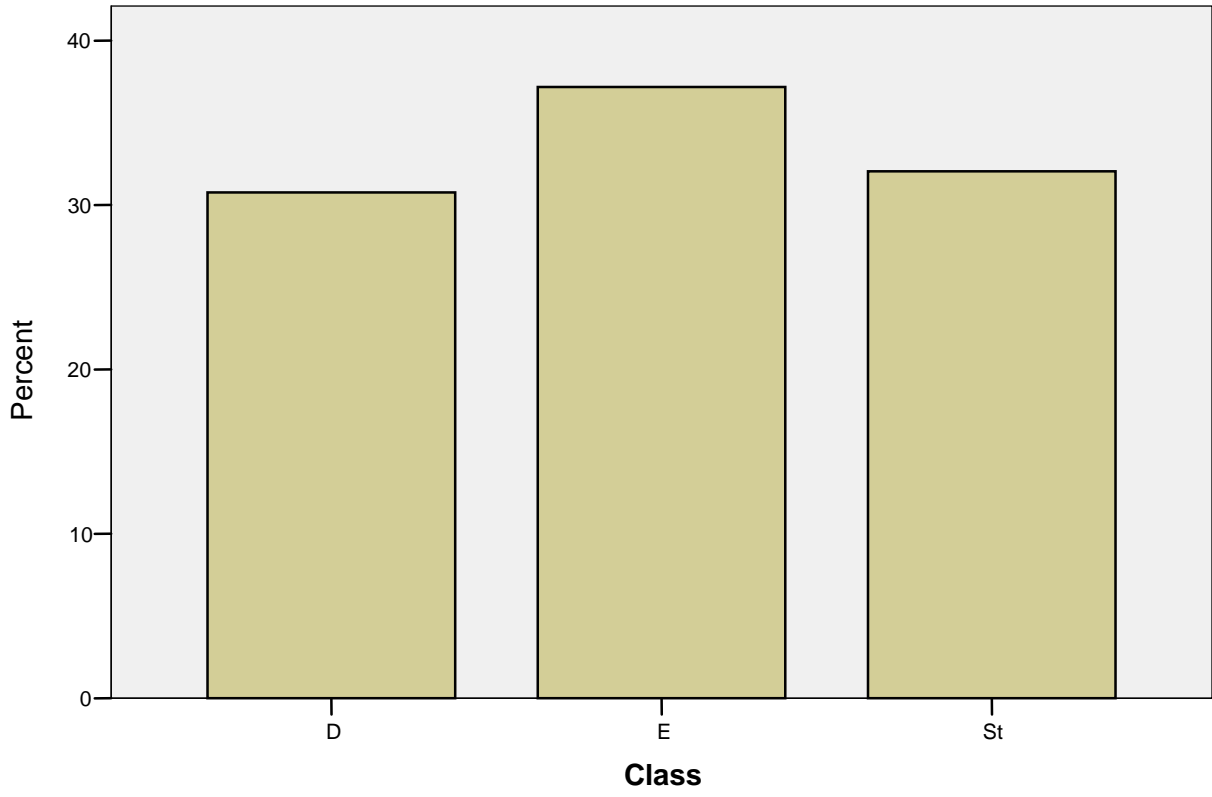
	Everything	3	3.6	7.9	100.0
	Total	38	45.2	100.0	
Missing	System	46	54.8		
Total		84	100.0		

Usage of mobile phone

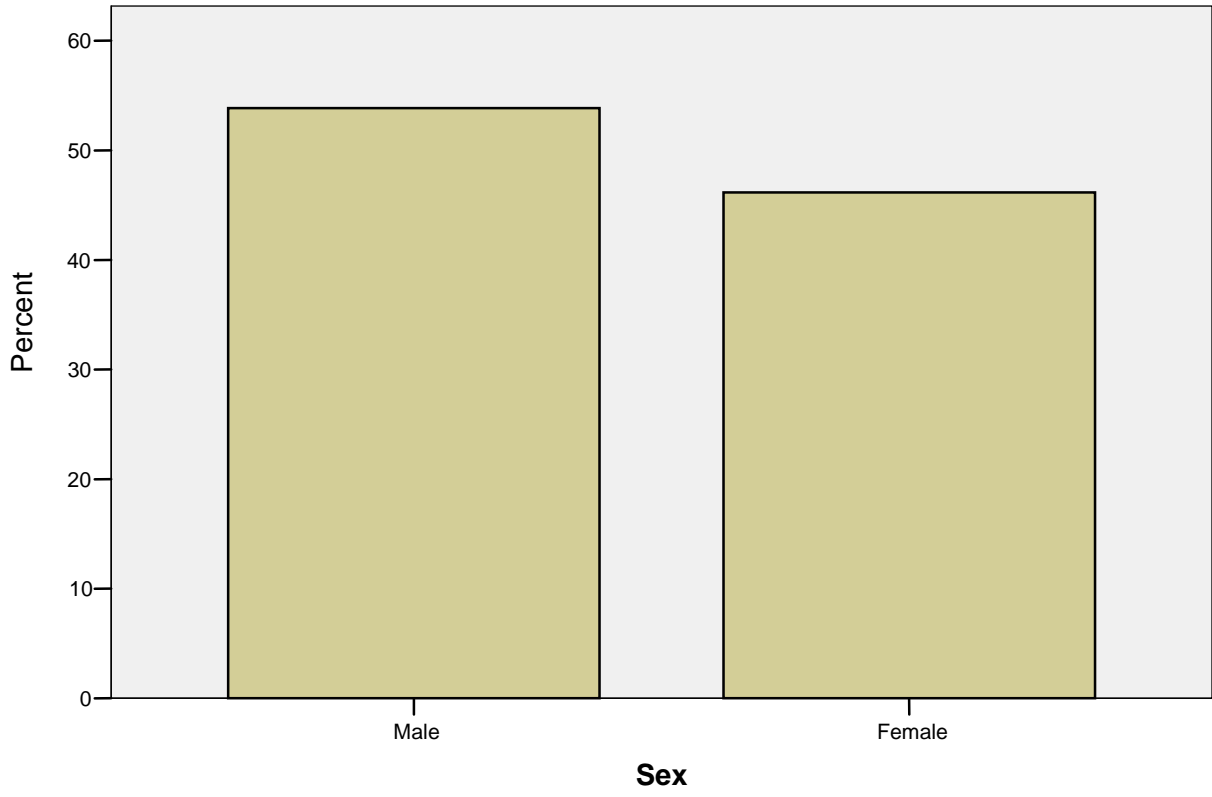
		Frequency	Percent	Valid Percent	Cumulative Percent
Valid	At home	7	8.3	18.4	18.4
	At school	1	1.2	2.6	21.1
	When I am out	18	21.4	47.4	68.4
	At other places	5	6.0	13.2	81.6
	Everywhere	7	8.3	18.4	100.0
	Total	38	45.2	100.0	
Missing	System	46	54.8		
Total		84	100.0		

Bar Chart

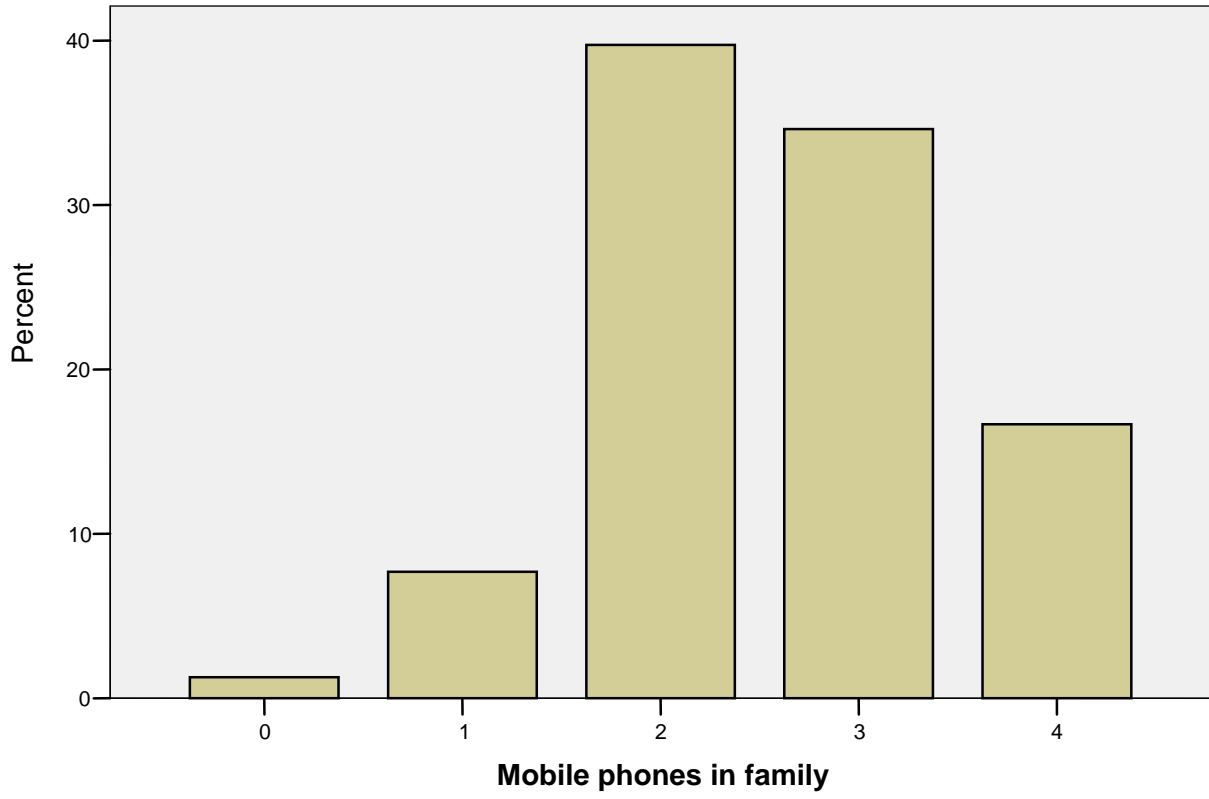
Class



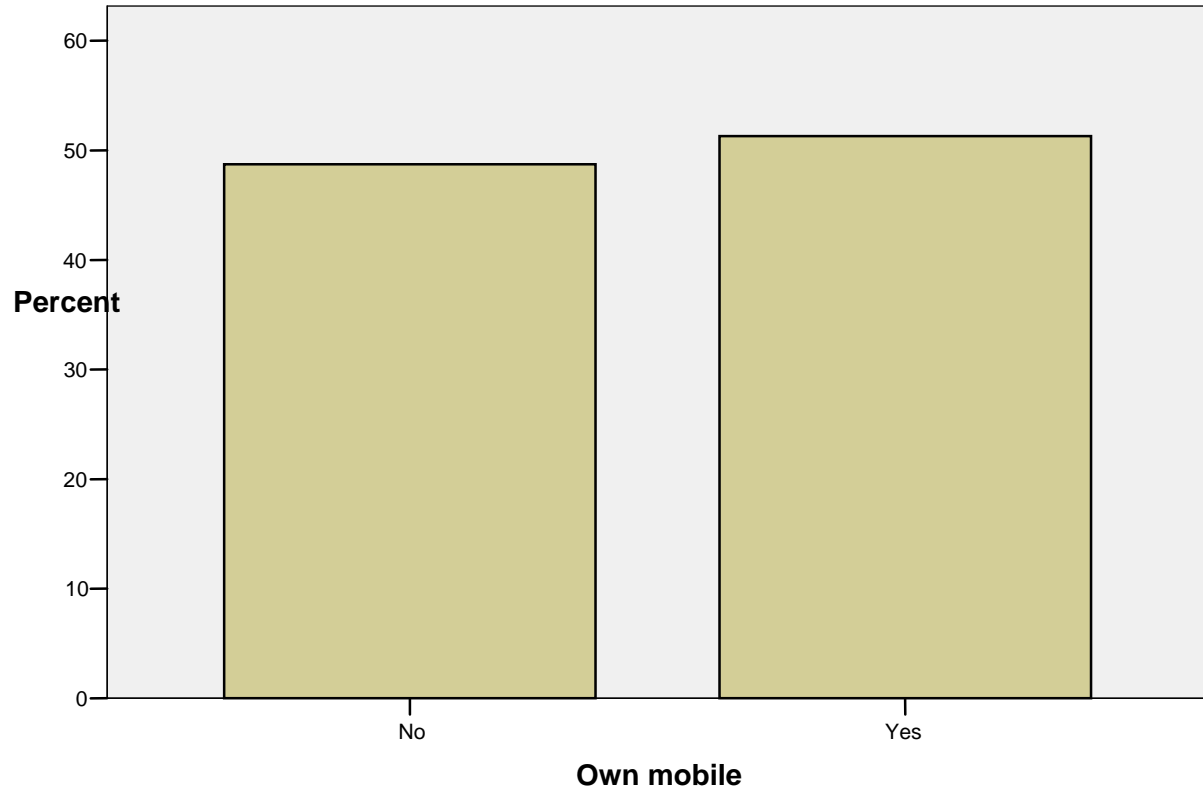
Sex



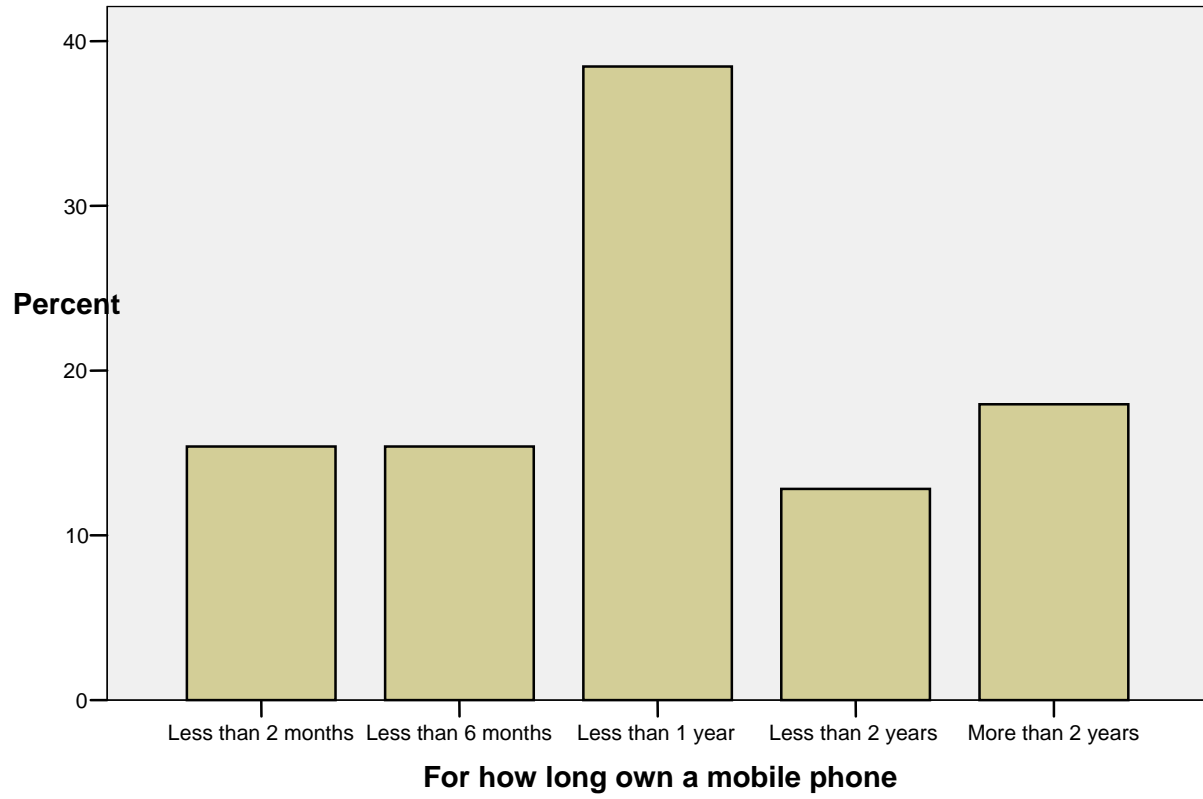
Mobile phones in family



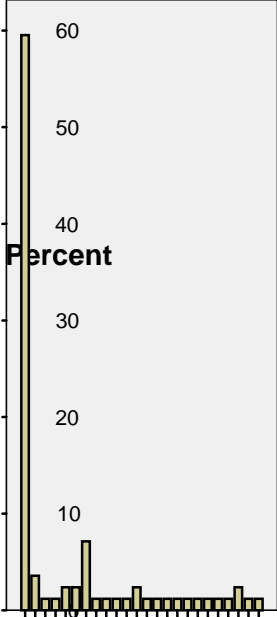
Own mobile



For how long own a mobile phone



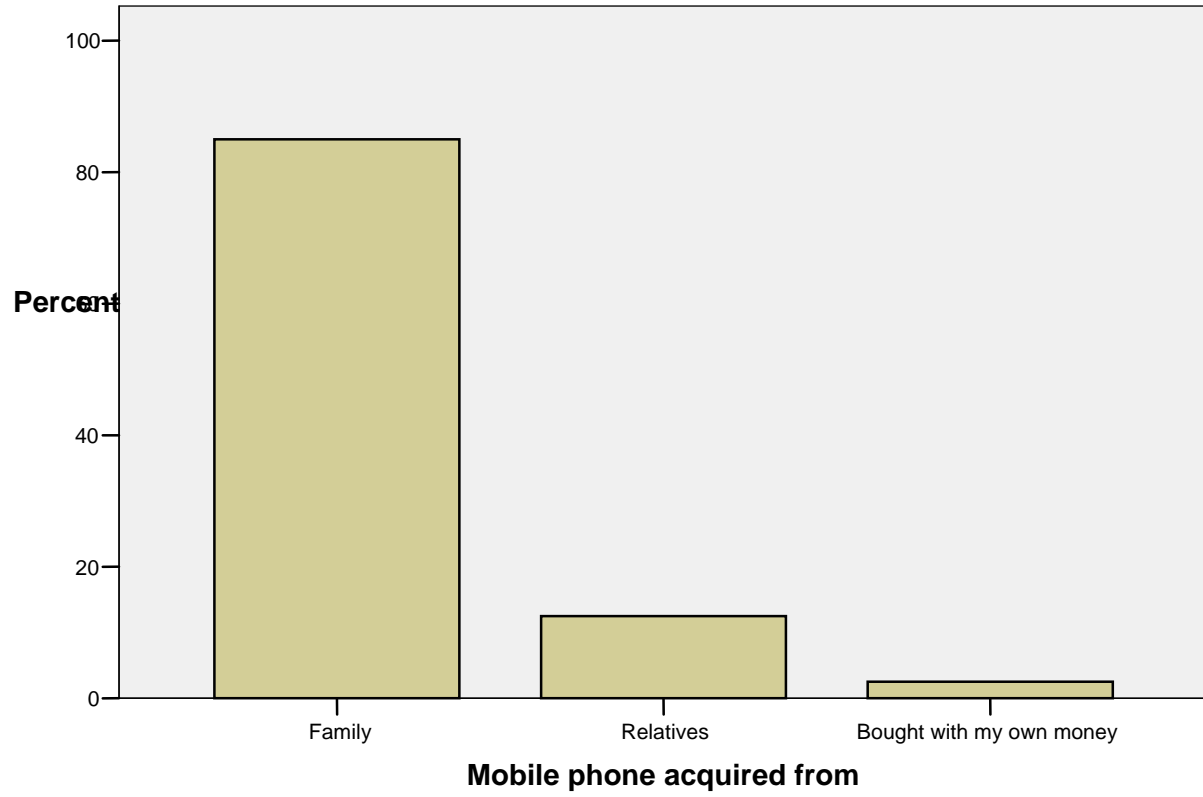
Type of mobile phone



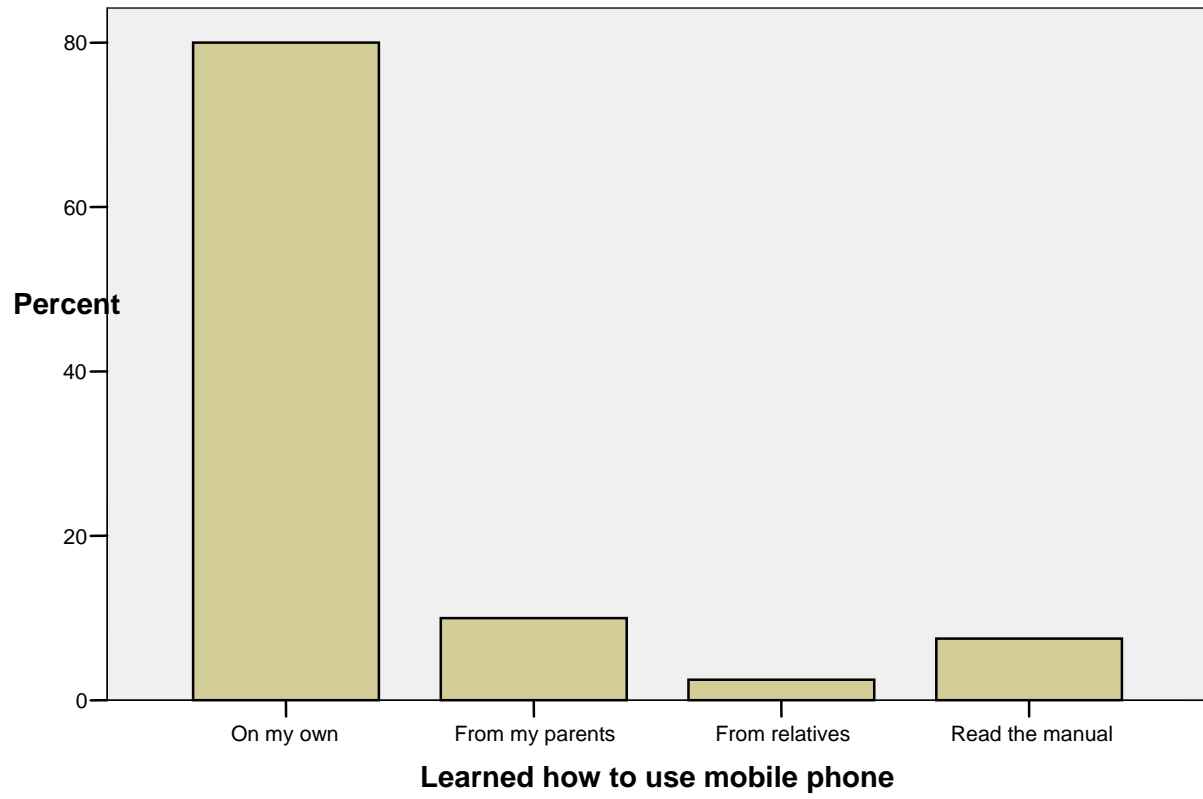
Alcatel Ericson LG 7100 Motrola e398 Nokia 1600 Nokia 2100 Nokia 3200 Nokia 3310 Nokia 3330 Nokia 3360 Nokia 3410 Nokia 5100 Nokia 7210 Panasonic G50 Panasonic X60 Panasonic MY C5-2 Sagem Siemens Sony Ericson K500i Sony Ericson T300 Sony Ericson T3200

Type of mobile phone

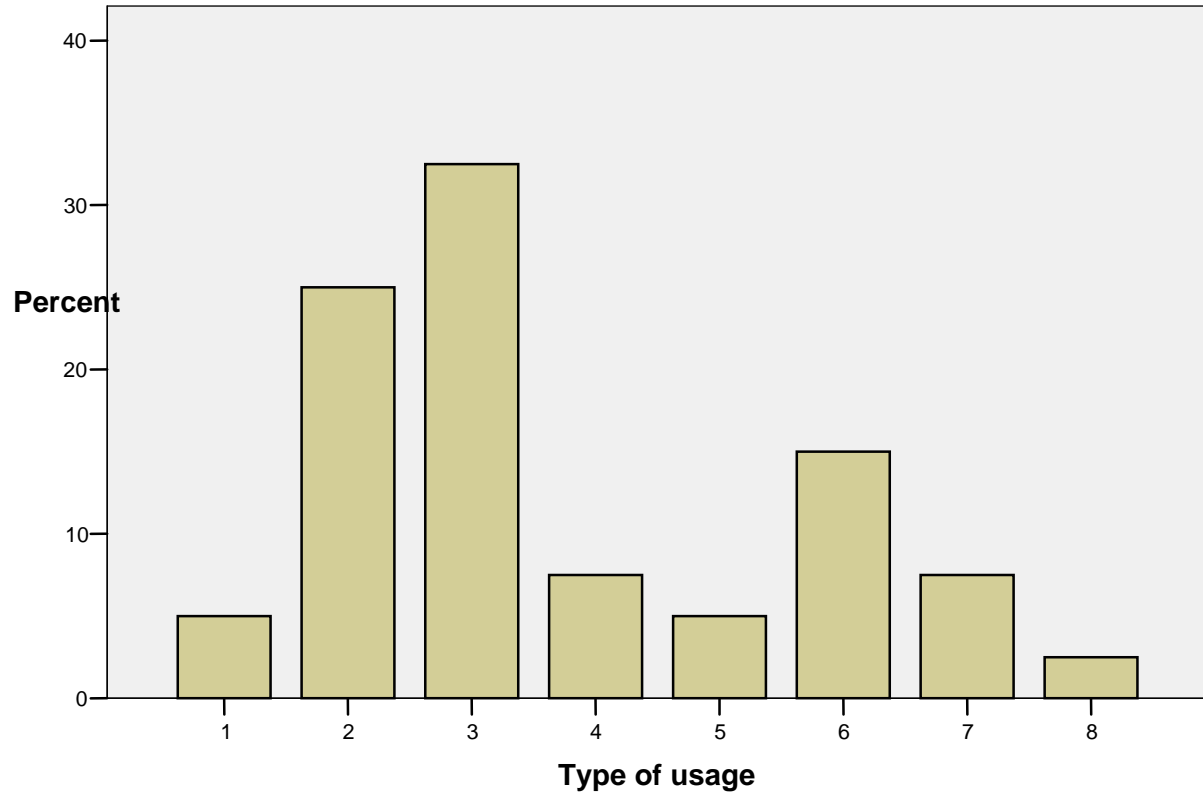
Mobile phone acquired from



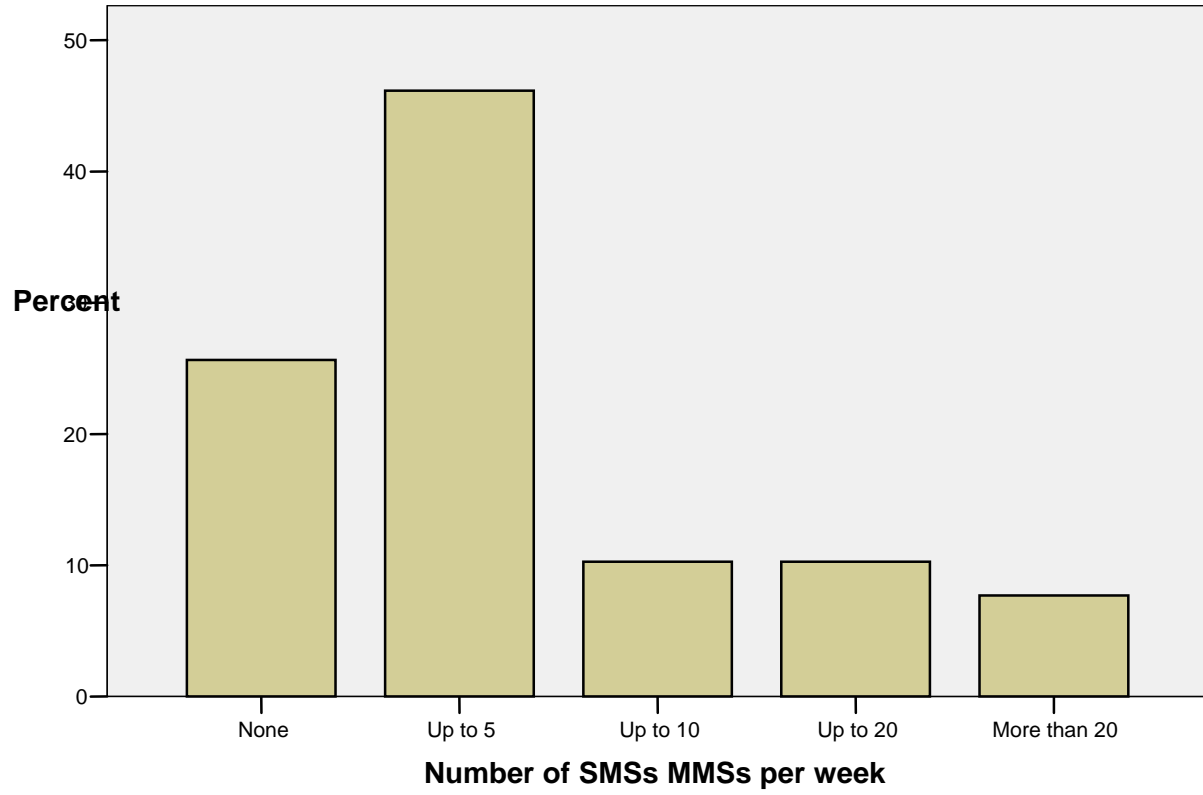
Learned how to use mobile phone



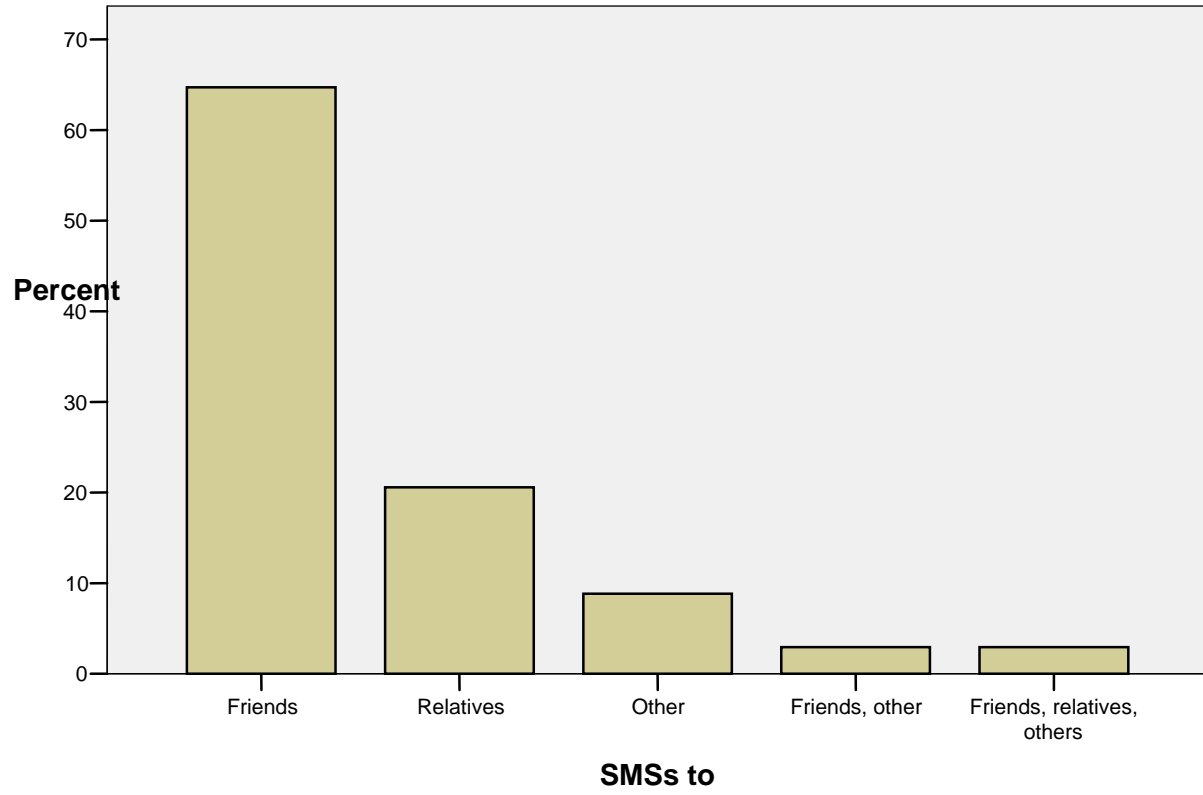
Type of usage



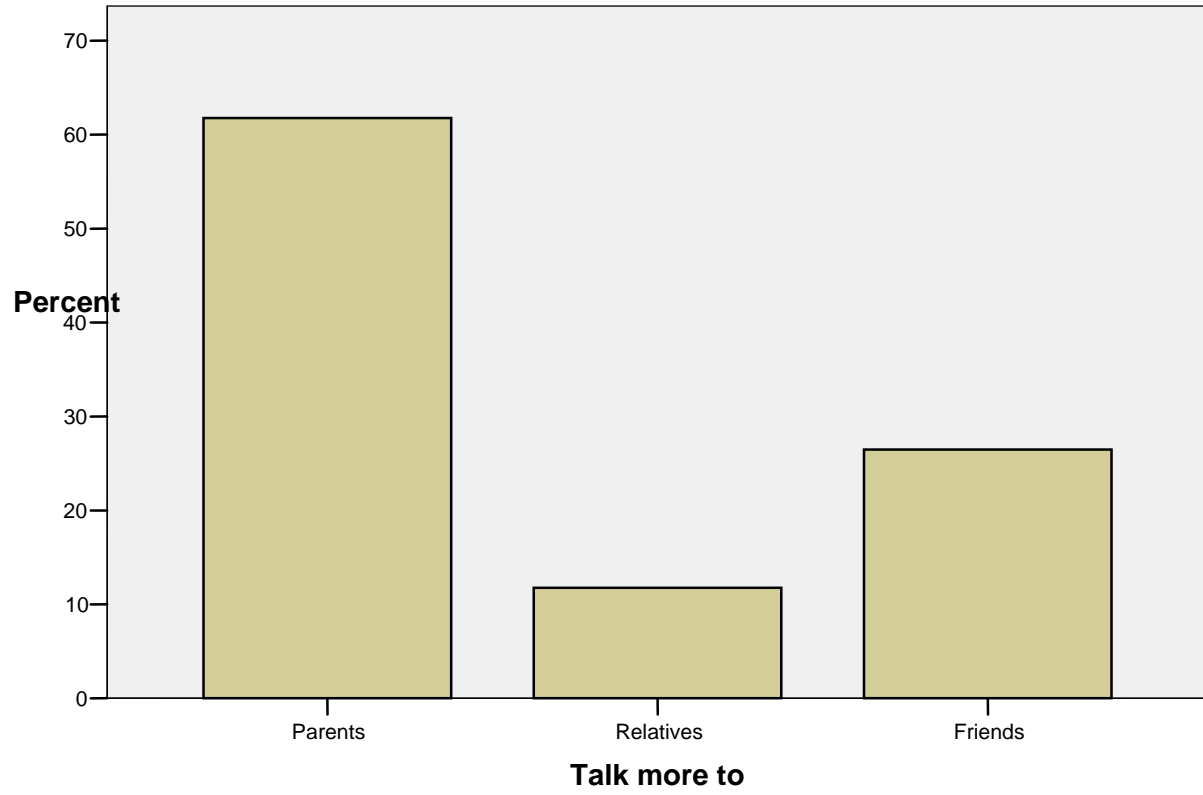
Number of SMSs MMSs per week



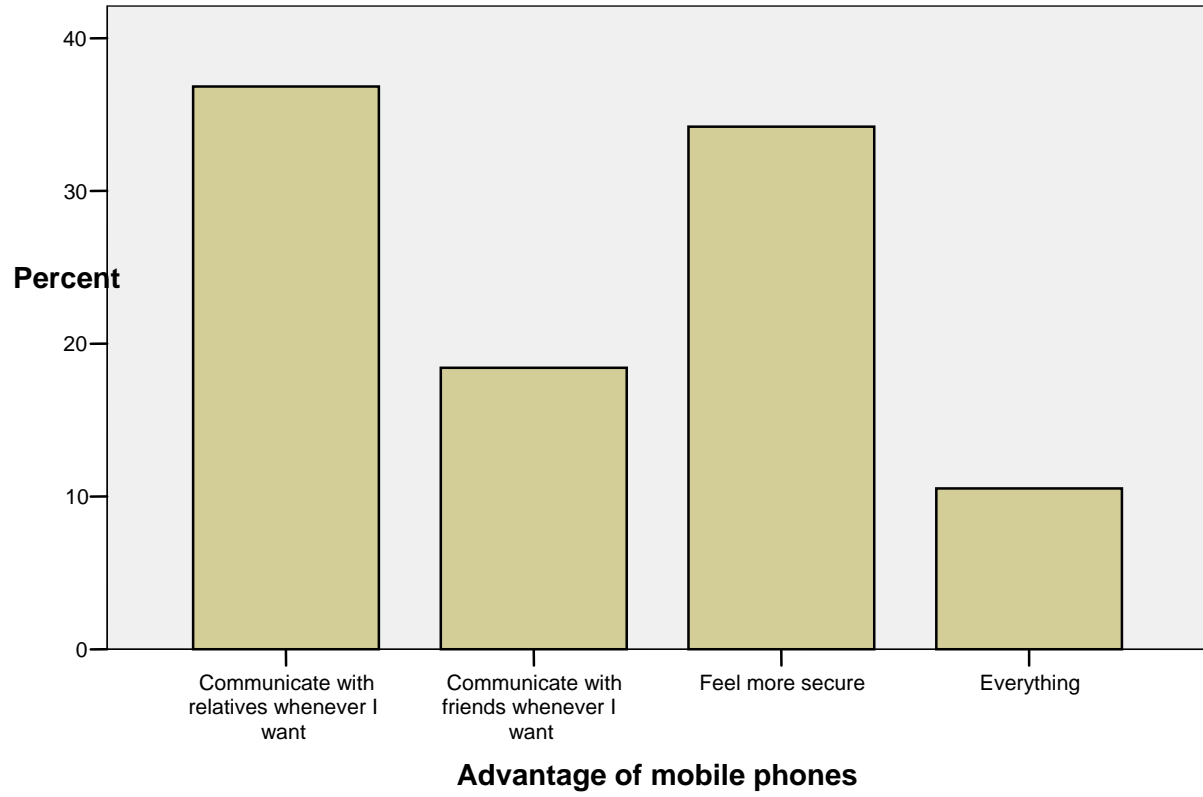
SMSs to



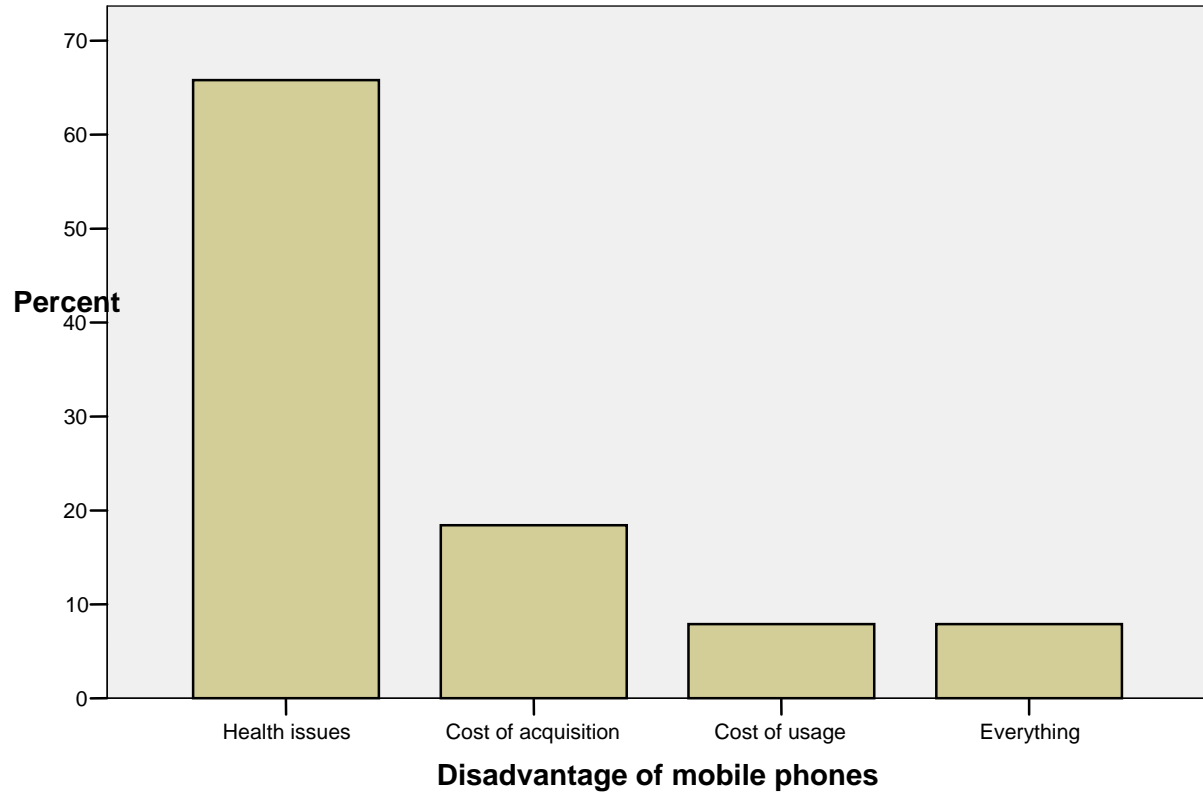
Talk more to



Advantage of mobile phones



Disadvantage of mobile phones



Usage of mobile phone

