

Oulu Capital
of Northern
Scandinavia



Jussi Tomberg
Senior Advisor
City of Oulu
Education and cultural services

Head of Project, Coordination of Finnish AspNet Schools
Head of Project, Climate change to Upper secondary schools

Tel +358. 44 7039186
Jussi.tomberg@ouka.fi

<https://oulunkehittajaopettajat.wordpress.com/>

<https://kohtivuotta2030.blogspot.com/p/kohti-vuotta-2030.html>

OULU

Some keywords to cooperation...

Think globally act locally

Phenomenological approach

Meaningfulness

Participation, active citizenship

Gamification

Respect by learning

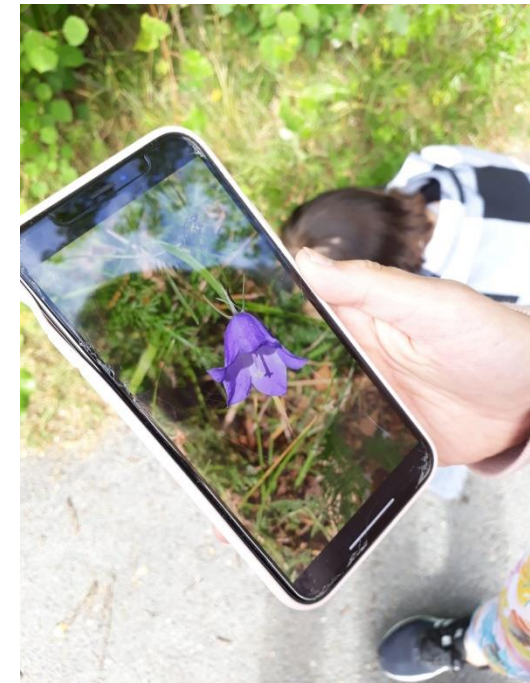
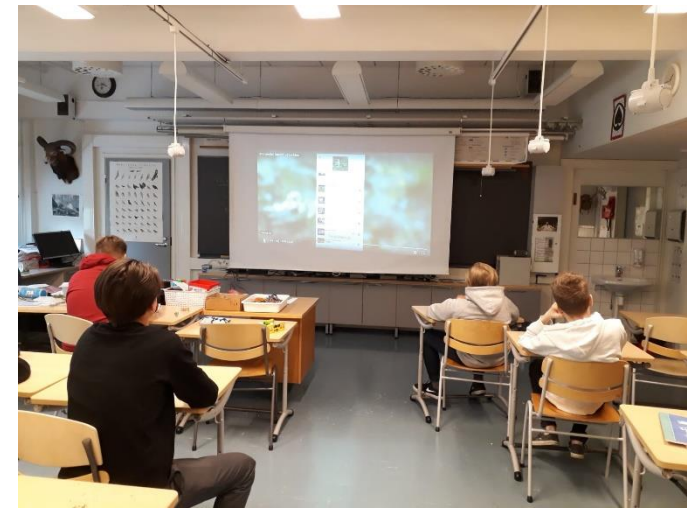
Laanila School BioBliz



iNaturalist is easy and fun way to see and learn biodiversity

Some comments from students:

- Easy to use
- It steals memoryspace from my phone!
- Project doesn't work properly
- Delay in results, we didn't see our plants in project site
- AI (Artificial Intelligence) is amazing
- Some kids was joking with application (cat, dog, apple etc.)



The invisible life of forests



Pitfall Trap

https://www.youtube.com/watch?v=SNo_7qZwrgk



Comparing different biotopes



Mire/Swamp

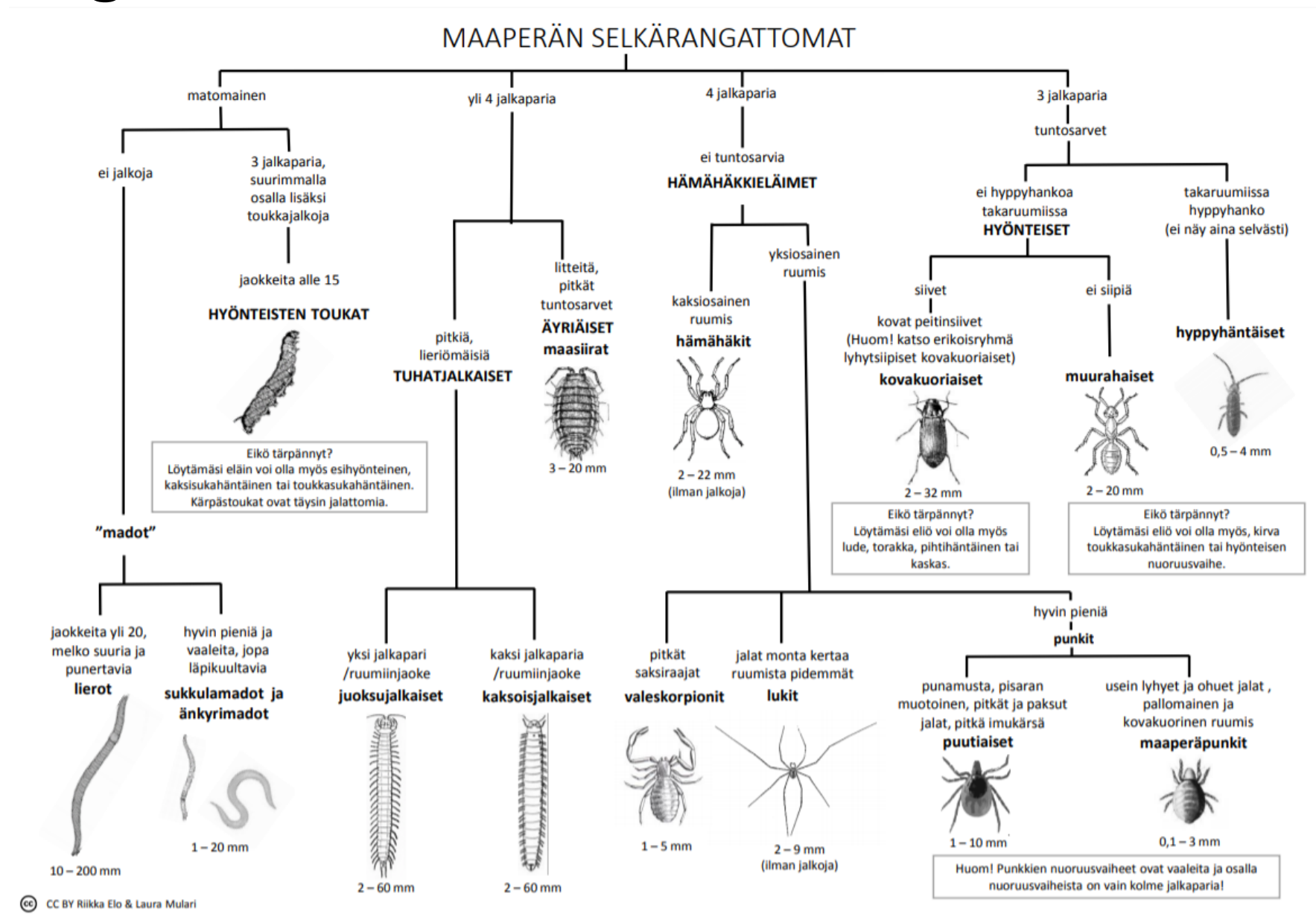


Euthropic forest



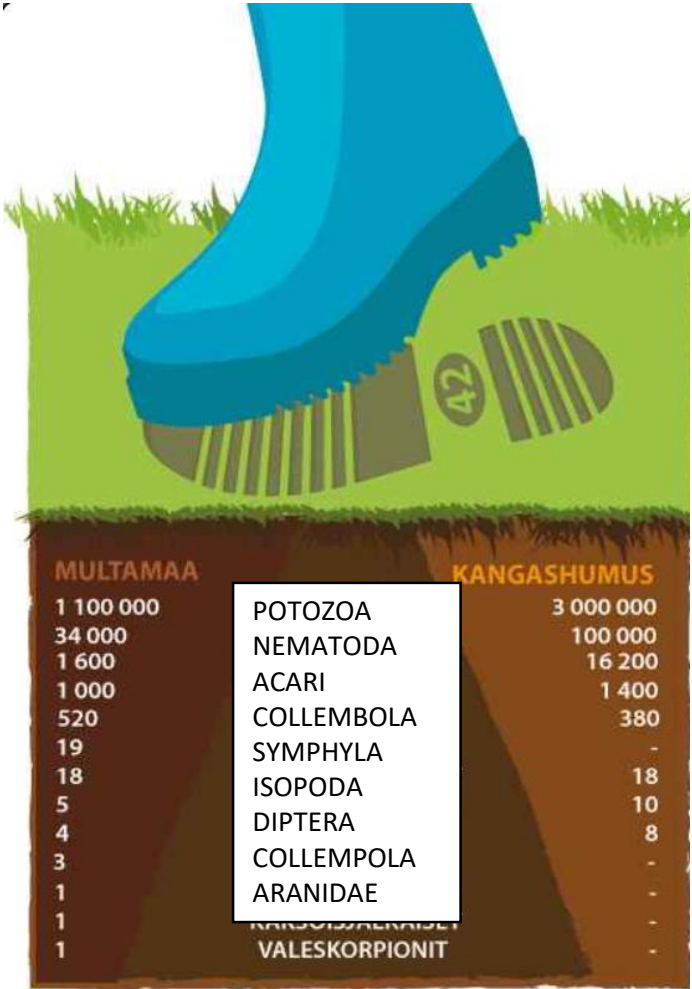
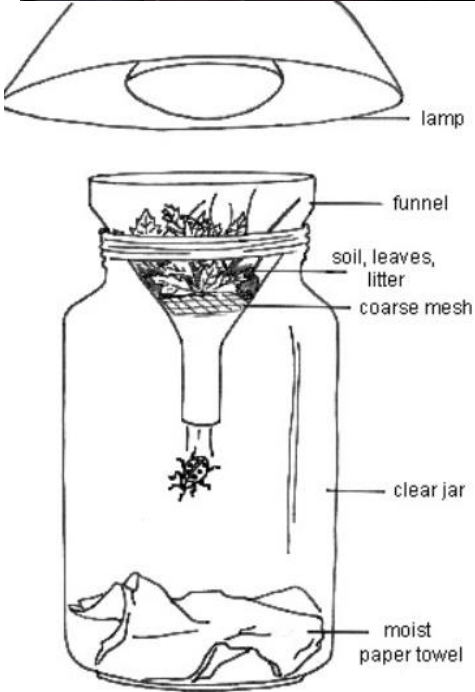
Dry forest

Taksonomy diagram



Research and science

Scary and fun, invertebrates of the soil



MULTAMAA

1 100 000
34 000
1 600
1 000
520
19
18
5
4
3
1
1
1

POTOZOA
NEMATODA
ACARI
COLLEMBOLA
SYMPHYLA
ISOPODA
DIPTERA
COLLEMPOLA
ARANIDAE

KANGASHUMUS

3 000 000
100 000
16 200
1 400
380
-
18
10
8
-
-
-
-

VALESKORPIONIT

Microscopic invertebrates

Water Bear,
The most resilient
animal in the
world.

It can survive:

In space

In volcano

In Artic Ice

<https://www.youtube.com/watch?v=H3ABLe9k7A>



The Heritage

- The Pine tells a story.
- A very old Pine cutted down from the schoolyard
- The dendrochronological method to research the past
- Making it meaningfull to me



See
Touch
Feel
Meaningfulness



Pateniemen raitti



- Background for Pateniemen raitti:
 - No money to take kids to Europe
 - Equal chances for all our students
 - Need for information
 - Something real and practical to do
 - Need to notice, that there is - and has been - a true connection to Europe!
History of our own area: busy international harbour for centuries!
- Together we are more – even here in the peripheries of Europe!
- <https://www.youtube.com/watch?v=q4jMABcfTys>